

*Dorm Specs Guide to*

# PAUL GRAY HALL



# WELCOME HOME

Dorm life is one of the special things you get to experience at college. You will get to learn how to live and interact with people who are different than you. You will learn how to motivate yourself to do things that your parents or guardian have done for you in the past. You will form lasting friendships. You will do lots of silly things and laugh uncontrollably. You will have deep, meaningful conversations. You will have midnight devotionals that help grow your faith into your own. It will be your “home away from home.”

This packet is a brief overview of what your new “home away from home” will look like. It is a blank slate, completely ready for your creativity to turn into something special. When you look back on your college experience, you’ll always remember your dorm sweet dorm.

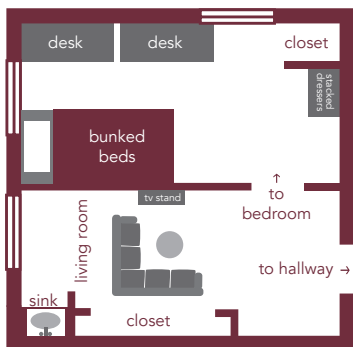
My name is Breanna Clouse (Mama Bre) and I am the Resident Hall Supervisor for Paul Gray Hall. Please, feel free to reach out to me with any questions you have related to dorm life or dorm rooms. My email is [bclouse@fhu.edu](mailto:bclouse@fhu.edu) and I will be happy to help you in any way I can.

Best Wishes,

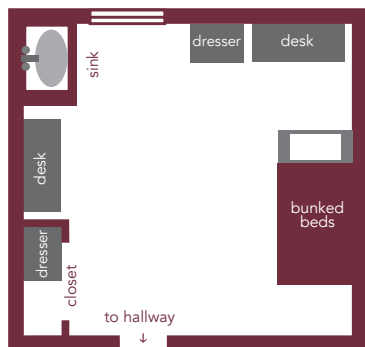
*Mama Bre*

“What you learn  
*in the residence halls*  
can be as important as  
*what you will learn in the classroom.*”





**SUITE STYLE TWO-PERSON ROOM**



**REGULAR TWO-PERSON ROOM**

## OVERVIEW

**GRAND REOPENING – 2022**

**CAPACITY – 82 MEN**

**LAYOUT – TWO PER ROOM**  
(REGULAR AND SUITE STYLE ROOMS)

**COMMUNITY BATHROOMS**





# FURNITURE SUITES



Freed-Hardeman University uses the MFS line of dorm furniture from RT London. Each student has a bed, desk, organizer and chest of drawers. With dozens of configurations, the furniture sets up just the way you want it and rearranges easily without tools. The versatile beds can be placed on the floor, bunked, or stacked on top of furniture to create trundled or lofted layouts. The bed frame can be flipped, allowing for two different height options. Pegs are provided by the university to assist with safe lofting practices.



## OTTOMAN

31" circumference x 17.5" H

## TV STAND

20" H x 36" L x 16" W

Includes two shelves and one cabinet.

## COUCH

66" L x 94.5" W x 17.5" H

The couch separates into 3 pieces for rearranging.

## SINGLE BED (WITH SIDE RETURN)

84" L x 41" W x 29" H

Fits a Twin XL mattress 80" x 38"

The bed frames can be flipped so that they are low to the ground, or higher, with more clearance beneath the mattress. If the bed is on the low side, there are 9" from the floor to the low side of the bed (with three extra inches of clearance actually directly under the bed). If the bed is on the tall side, there are 14" of clearance (also with three extra inches directly under the mattress).

## CHEST OF DRAWERS

36" L x 24" W x 29" H

Top drawer = 3.5" H

Middle and bottom drawers = 6" H

## DESK

36.5" L x 24.5" W x 29" H

Includes one drawer that is 32" L x 12.5" W x 2" H

## ORGANIZER

34" L x 11" W x 29" H

This piece is on top of the desk in the picture above. It's customarily placed there to maximize vertical storage, but it can also be used as a freestanding piece to loft the beds. The organizer has a small bulletin board attached to it and an overhead light that plugs into the wall in the back of the unit.

## CHAIR

There are 16" from the floor to the top of the seat. The "seat" portion of the chair is 18.5" L x 19" W.

# FURNISHINGS PER ROOM:

- 2 SINGLE BEDS
- 2 CHEST OF DRAWERS
- 2 DESK ORGANIZERS
- 2 CHAIRS
- 1 OTTOMAN
- 1 COUCH
- 1 TV STAND
- 1 PRE-MOUNTED 42" TV



# FURNITURE

## REGULAR ROOMS

### FURNISHINGS PER ROOM:

2 SINGLE BEDS

2 CHEST OF DRAWERS

2 DESK ORGANIZERS

2 CHAIRS



### SINGLE BED (WITH SIDE RETURN)

84" L x 41" W x 29" H

Fits a Twin XL mattress 80" x 38"

The bed frames can be flipped so that they are low to the ground, or higher, with more clearance beneath the mattress. If the bed is on the low side, there are 9" from the floor to the low side of the bed (with three extra inches of clearance actually directly under the bed.) If the bed is on the tall side, there are 14" of clearance (also with three extra inches directly under the mattress.)

### CHEST OF DRAWERS

36" L x 24" W x 29" H

Top drawer = 3.5" H

Middle and bottom drawers = 6" H

### DESK

36.5" L x 24.5" W x 29" H

Includes one drawer that is 32" L x 12.5" W x 2" H

### ORGANIZER

34" L x 11" W x 29" H

This piece is customarily placed on top of the desk to maximize vertical storage, but it can also be used as a freestanding piece to loft the beds. The organizer has a small bulletin board attached to it and an overhead light that plugs into the wall in the back of the unit.

### CHAIR

There are 16" from the floor to the top of the seat. The "seat" portion of the chair is 18.5" L x 19" W.

# WINDOWS

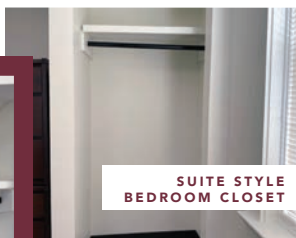
Regular rooms each have one window.

Suite style rooms have one window in the living area and two windows in the bedroom area.

All windows measure 40" W x 56" H.



**SUITE STYLE LIVING ROOM CLOSET**



**SUITE STYLE BEDROOM CLOSET**

# CLOSETS

Regular style rooms each contain one shared closet that measures 32" W x 64" L x 84" H. Each closet contains one bar, 64" L. The shelf measures 19" W x 64" L x 17.5" H.

Suite style rooms contain one closet in the bedroom area that measures 33" W x 29" L x 84" H. Each closet holds a rod 29" L.

The living area contains a larger closet that measures 32" W x 62" L x 84" H. Each closet contains a bar 60" L. The shelf measures 17.5" W x 61" L x 17.75" H.



**REGULAR ROOM CLOSET**



# PARTICLE DETECTION



Smoking and vaping are not allowed on campus. Each room has a particle detector that can sense not only smoke but also steam/spray. For this reason, extra precautions should be taken not to spray any air fresheners, body products, etc. near this device.

# HEAT & AIR

Each regular room has its own central heat/air unit which affects only that room.

Each suite style room has a central heat/air unit in the bedroom area and a separate central heat/air unit in the living area.



## **SINK AREA**

Each Paul Gray room has a sink in the room with some storage underneath it. The size of that under sink storage area is approximately 28" L x 17" W. There is a sink basin and pipe coming down in the center of the storage area. It is approximately 27" from the floor to the bottom of the sink.

## **BATHROOMS**

Paul Gray has community bathrooms. There is one bathroom on each floor except the basement, which has two. Each bathroom has one sink and mirror, three toilets in stalls, and four separate showers. The extra bathroom in the basement has two toilets in stalls and three separate showers.



# **SINK AREA & BATHROOMS**

# KNOW

Paul Gray Hall holds 19 Regular Rooms sized 170" L x 129" W x 92" H. There are 21 Suite Style Rooms that include a living space measuring 170" L x 132" W x 92" H and a bedroom space measuring 170" L x 136" W x 92" H. All rooms include automatic door locks.

Shared spaces in Paul Gray include a lobby area with a pool table, a living room area with a TV, a kitchen and a conference room. The shared laundry room has four washers and four dryers.

Residents are responsible for damages to the room and/or furnishings and may be fined for any damages. Residents will complete a room inventory sheet recording the state of the room upon move in and check out every year.

Furniture cannot be removed from the room at anytime. Furniture should not be moved between rooms, even if it is returned at the end of the year. No suiting with other rooms is allowed.

Use only self-adhesive hooks or tack to hang things on the walls. Please take care when removing self-adhesive hooks. Nails and screws are not allowed.

Carpets and/or rugs are allowed as long as they are not adhesively applied. No laminate flooring, etc. that will damage the tile.

Nothing can hang from any ceiling.

# TO

# GOOD

# FAQ

## **WHAT IS THE DIFFERENCE BETWEEN A TWIN BED AND TWIN XL BED?**

Both are 38" W but a twin XL is longer. A traditional twin size mattress is 75" in length whereas a twin XL is 80".

## **CAN A TWIN COMFORTER FIT ON A TWIN XL BED?**

You may be able to fit a twin comforter on a twin XL bed, but the length of the comforter may be short. However, if the fitted sheet does not account for the appropriate depths, you may run the challenge of keeping the fitted sheet on the bed.

## **HOW MANY ELECTRICAL OUTLETS ARE IN THE ROOM?**

Suite Style rooms contain three power outlets in the living area and three power outlets in the bedroom. Regular Style rooms contain three power outlets.



## **WHAT IS THAT BRIGHT LIGHT IN MY ROOM? (PICTURED LEFT)**

Some of the rooms have WiFi routers attached to the ceiling. There is a little bright light that illuminates the room on this box. Residents may cover it with a small piece of painter's tape or a sock.

## **MAY I BRING IN OUTSIDE FURNITURE?**

Yes, but all the FHU furniture that was in the room to start with must remain. Also, be diligent about bringing in only clean, quality pieces of furniture, as inexpensive pieces bought from Craigslist or Facebook Marketplace may be hiding little critters that you would NOT want to share your dorm space with!

## **IF I HAVE A SPECIFIC QUESTION ABOUT MY ROOM, WHO DO I ASK?**

Once you receive your room assignment from housing, the resident is welcome to email Breanna Clouse/Mama Bre at [bclouse@fhu.edu](mailto:bclouse@fhu.edu). If you reach out during summer months, she will get back with you as soon as possible but no later than August 1.

